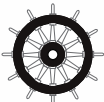
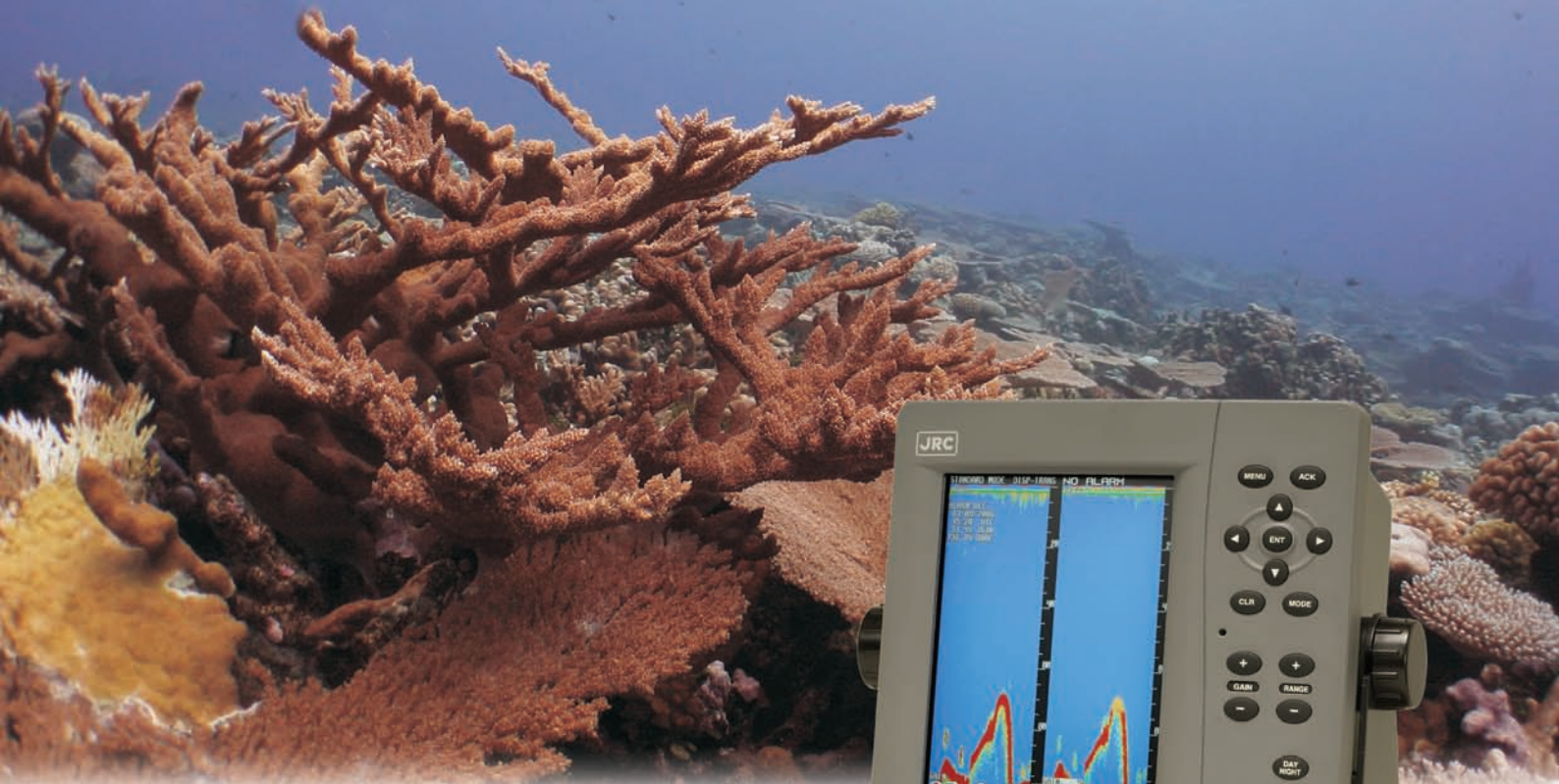


# JFE-380 Echo sounder



*– a colour LCD echo sounder from JRC incorporates new depth data technology*

**6.5–inch high visibility display**

**Memorises last 24 hours of depth data**

**Optional printer**

**Highly accurate and reliable read-out**

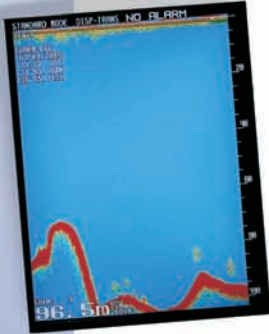
**Designed according to latest IMO regulations**

# JFE-380 echo sounder

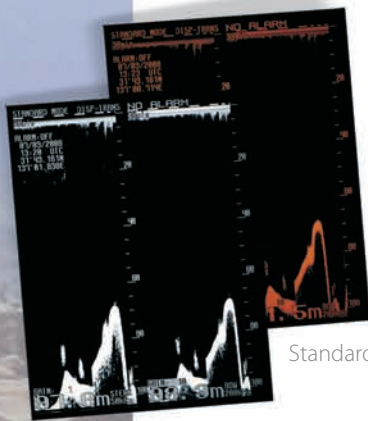
## – performance features

### Unique features

- The JFE-380 echo sounder continues the tradition of enhanced depth technology, resulting in highly accurate and reliable read-out functionality.



Standard mode



Standard mode

### Display modes

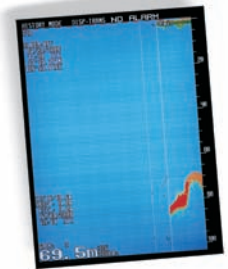
JRC's new echo sounder incorporates a 6.5-inch high visibility colour LCD screen. The innovative display modes allow you to select and view echoes in 8 colours or 8 levels of monochrome. In addition, the size-reduced JFE-380 echo sounder incorporates printer adaptability, providing the ship's log with valuable printouts if required.

### Depth data management

The enhanced depth data technology has three central presentation modes, standard, history and docking. Both standard and docking mode provide a wide range of information. This is stored in the memory for up to 24-hours. The history mode allows you to retrieve all memorised depth data to provide complete feedback.



Docking mode



History mode

### JRC StarNetwork™

JRC has been providing sales and support of products since 1915. Today, JRC offers comprehensive assistance through its organisation, in partnership with a worldwide StarNetwork™ of over 270 fully trained and qualified partners and agents, assisting you 24 hours a day, 7 days a week and 365 days a year.



**JRC one-call™**

**One number to call**  
With JRC you can go anywhere and if you need our support, simply call us at +81 3 3492 9201, anytime.

# JFE-380 echo sounder

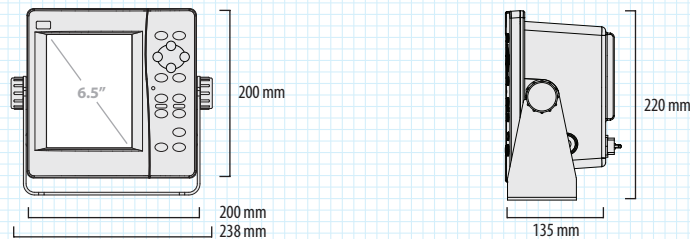
## – dimensions and weights

### Flexible installation

The compact connection box can be installed out of sight. An optional dual frequency configuration, 50 kHz or 200 kHz, allows you to operate both frequencies independently or simultaneously, or allows you to have a separate bow-stern depth read-out.

#### Dimension drawings - Display

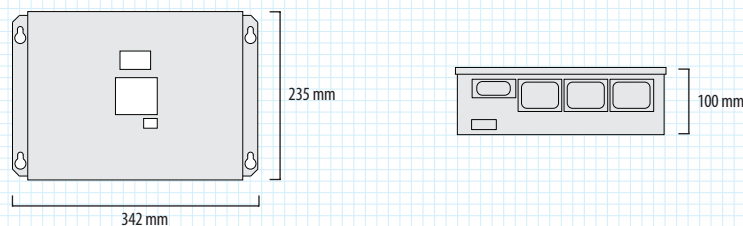
**NJA-98**  
Weight 4 kg



cutout for panel mount height 176 mm, width 192 mm, depth 220 mm

#### Dimension drawings - Connection box

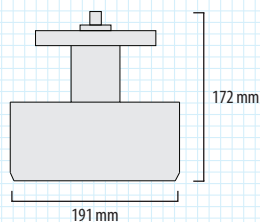
**NQD-2120**  
Weight 4 kg



#### Dimension drawings - Transducer, Matching box

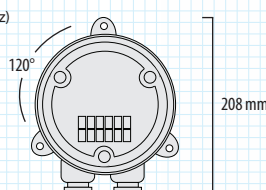
**NKF-345** (50 kHz)  
Weight 20 kg

**NKF-341** (200 kHz)  
Weight 22 kg



**AW-154F-50** (50 kHz)  
Weight 4 kg

**AW-154F** (200 kHz)  
Weight 4 kg



### What's standard in the box?

1. Display<sup>1</sup>
2. Connection box
3. Transducer<sup>2</sup>
4. Matching box<sup>2</sup>
5. Cables
6. Spare parts
7. Manual

#### Which cables?

Transducer to matching box <sup>3</sup>	20 m
TX/RX cable <sup>4</sup>	10 m
Communication cable <sup>4</sup>	10 m
Power cable <sup>4</sup>	10 m

<sup>1</sup> excluding bracket

<sup>2</sup> dual frequency or bow-stern possible, depends on configuration (50 kHz and/or 200 kHz)

<sup>3</sup> attached to transducer

<sup>4</sup> fitted between connection box and display

# JFE-380 echo sounder

## – specifications

Model		JFE-380
IMO compliant		✓
General		
Display	6.5-inch, colour LCD, 480 by 640 pixels	
Frequency	200 kHz, 50 kHz	
Output power	200 kHz: 1 kW, 50 kHz: 500 W	
Echo colour	8 colours or 8 levels monochrome	
Digital depth	4 digits (0.1 m)	
Range	10, 20, 50, 100, 200, 500, 800 m	
Depth accuracy	±2.5%	
Minimum sounding depth	1 m (200 kHz), 2 m (50 kHz)	
Draft adjust	50 m in 0.1 m steps	
TX pulse repetition rate	171 PRR (10, 20, 50 m), 68 PRR (100, 200 m), 43 PRR (500, 800 m)	
Presentation mode	standard, history, docking	
Time range of echo display	5, 10, 20, 30 min	
Auto function	gain, range	
Alarm function	depth (shallow depth), power failure, system error	
Preview function	24 hrs memory	
Image printer	external (option)	
Interfaces		
NMEA version	1.5, 2.3	
NMEA input	JRC, RMA, RMC, GLL, VTG, ZDA, GGA, ACK	
NMEA output	version 1.5 DBS, DBT, DBK, version 2.3 JRC, ALR, DPT	
Printer in/out	RS232C	
Power supply		
DC	24V DC +30% -10% (for power fail alarm only)	
AC	100-115V to 200-230V AC ±15%, 50/60 Hz ±5%	
Power consumption	≤20 W	
Environmental conditions		
Operating temperature	-15° to 55°C	
Storage temperature	-25° to 75°C	
Humidity	0% to 93% non-condensing	
Water resistance	display IPX5, connection box IPX2	
Optional items		
Flush mount	BRBX05339	
Table mount	BRBX05353	
Remote display (4-inch)	NWW-58	
Junction box (for remote display)	CQD-10	
Dimmer unit (for remote display)	NCM-227D	
Output buffer	NQA-602DC	

All specifications are subject to change without notification.

For further information please contact:



**Japan Radio Co., Ltd.**

JRC

Cessnalaan 40-42

1119 NL, Schiphol-Rijk, The Netherlands

**T** +31 20 6 580 750

**F** +31 20 6 580 755

**E** sales@jrceurope.com

**W** www.jrceurope.com